



New Single-Use Adjustable Vacuum Trephine

Moria has delivered what corneal surgeons have been asking for: a single-use vacuum trephine (#17202) designed to produce **straight-walled cuts** for penetrating and lamellar keratoplasty.

■ Central flattening for straight-walled cuts

- Cornea is maintained during trephination, inside and outside the blade
- Flattening system conforms perfectly to the cornea
- Limbal suction for greater efficiency
- Very thin, symmetrical blade

■ Precise cut

Adjustment ring enables setting the blade descent depth in 50-micron increments, from 200 to 1200µm.

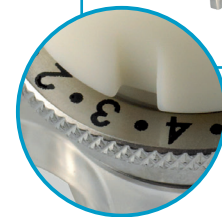
■ Larger vacuum surface

Vacuum surface and the suction strength 3 times greater than other single-use trephines.

■ Accurate centration indicator

Transparent centration indicator ensures optimal positioning and no parallax errors.

■ Good ergonomics



Adjustment ring

For surgical procedures in which the adjustment is not used, a simplified single-use vacuum trephine is also available (#17201).





**For optimal donor trephination
from epithelial side**

The Single-Use Adjustable Vacuum Trephine can be used on the Moria Single-Use Artificial Chamber (#17204) to cut the donor cornea from the epithelial side.

■ Donor-recipient match

Cutting the donor and recipient tissue with the same devices reduces shape disparity, and may induce less astigmatism. The procedure is simplified and recovery time is reduced.

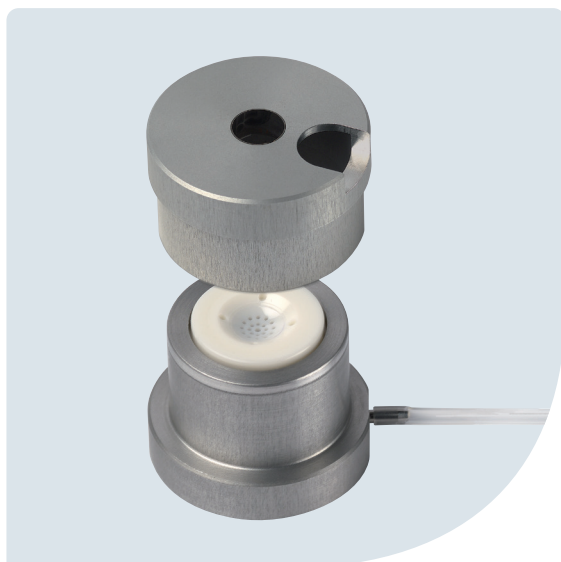
■ Consistent, straight-walled cuts

Facilitate graft placement.

■ Available in 10 diameters:

From 7.00 mm to 9.00 mm (in 0.25 mm increments) and 9.50 mm.





Single-Use Corneal Vacuum Punch

The ONE® corneal vacuum punch (#17200) features a 2-piece design with an ultra-sharp pre-loaded blade and is supplied with a spring-loaded syringe. Easy to set up and very precise, it produces straight-walled cuts for Penetrating and Lamellar Keratoplasty.

■ Diameters from 7.00 to 9.50 mm

■ Top lateral window

The lateral window on top of the trephine blade housing allows grasping and gentle manipulation of the sclera, with a tooth forceps, in order to detach the donor corneal button from the remaining sclera.

■ 20 vacuum holes

Facilitate obtaining vacuum and distributing it evenly over the cornea, avoiding distortion of delicate corneal tissue and preventing shifting during trephination.

■ Four cardinal holes

Simplify centration of the graft. A marking pen may be used in these holes to produce reference marks for lamellar procedures.

To obtain more information



MORIA SA
15, rue Georges Besse
92160 Antony
FRANCE
Phone: +33 (0) 1 46 74 46 74
Fax: +33 (0) 1 46 74 46 70
www.moria-surgical.com

MORIA Inc
1050 Cross Keys Drive
Doylestown, PA 18902
USA
Phone: (800) 441 1314
Fax: +1 (215) 230 7670
www.moria-surgical.com

MORIA JAPAN KK
Inami Bldg. 6F
3-24-2 Hongo Bunkyo-ku
Tokyo 113-0033
JAPAN
Phone: +81 3 5842 6761
Fax: +81 3 5842 6762
www.moriajapan.com

MORIA in CHINA
Moria Commercial (China) Co. Ltd
Rm H, I, 6FL, Kai Li Building
N° 432 Huai Hai West Road
Shanghai 200052
CHINA
Phone: +86 21 5258 5066
Fax: +86 21 5258 5067
www.moria-surgical.com.cn

Moria
Leading Innovations in Ophthalmology

Single-Use Instruments



Single-Use Vacuum Trephine Corneal Vacuum Punch



Redefining precision trephination
for recipient and donor corneas