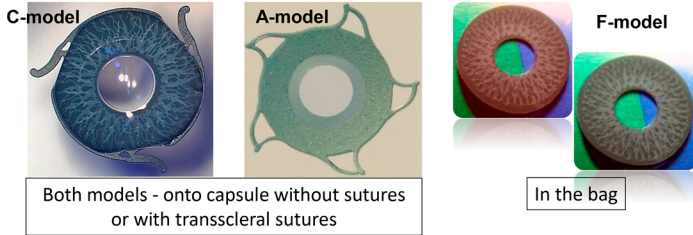


Artificial iris-lens diaphragm (ILD) model range *



FAN-CATALOGUE FOR ILD SELECTION BASED ON IRIS COLOR AND PATTERN



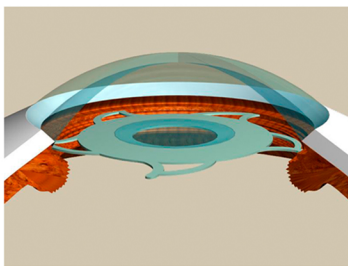
Selection criteria for surgical management of aniridia:

- extent of iris defect,
- capsular bag integrity,
- extent and location of anterior segment injury,
- posterior segment status

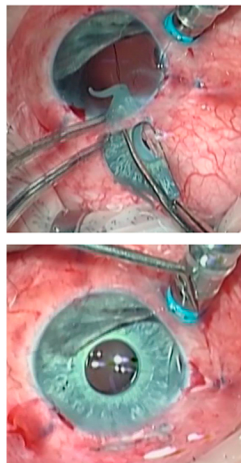
ILD fixation options: in the bag, onto capsular remnants, transscleral sutures



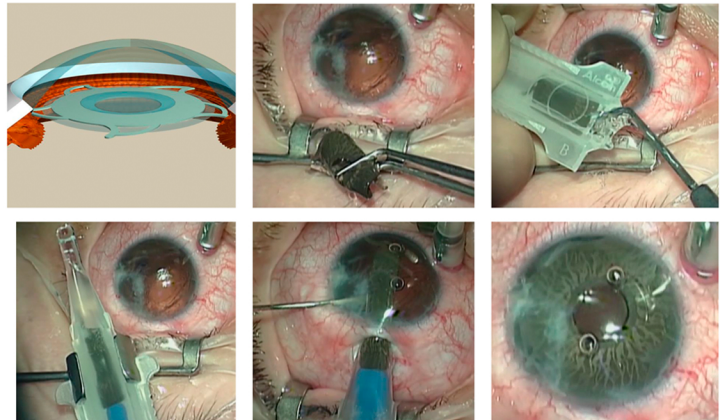
Implantation with no capsular support



- ✓ Forceps-assisted (any power), transscleral sutures

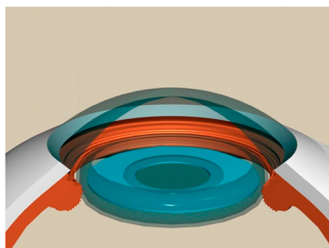


Implantation onto capsular remnants

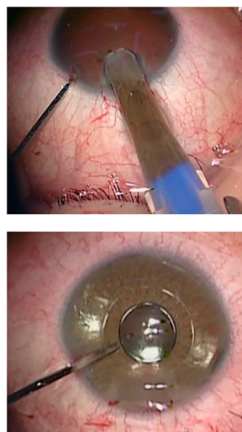


- ✓ Injector-assisted (power ≤ 23 D), no suture
- ✓ Forceps-assisted (any power), no suture

Intracapsular fixation



- ✓ Injector-assisted (power ≤ 23 D)
- ✓ Forceps-assisted (any power)



Cosmetic results

The Reper device is used clinically in Russia since 2003
More than 600 implantations
Available in Europe (CE mark)

